



County Hall  
Cardiff  
CF10 4UW  
Tel: (029) 2087 2000

Neuadd y Sir  
Caerdydd  
CF10 4UW  
Ffôn: (029) 2087 2000

## PRESENTATIONS

**Committee**                    COMMUNITY & ADULT SERVICES SCRUTINY COMMITTEE

**Date and Time  
of Meeting**                WEDNESDAY, 8 JANUARY 2020, 4.30 PM

Please see attached the Presentation(s) provided at the Committee Meeting

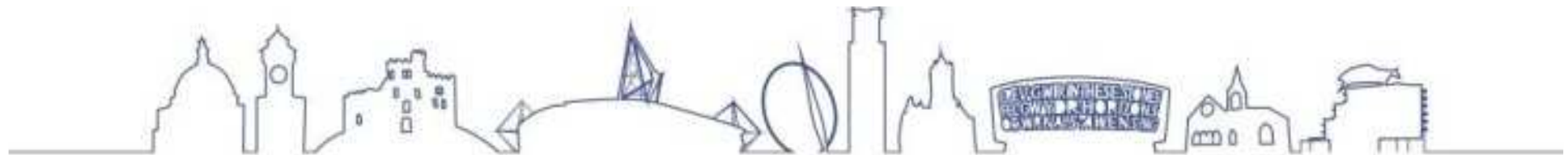
10            **Presentations** *(Pages 3 - 14)*

This page is intentionally left blank

# **Fear of Crime and its Effect on Cardiff Communities**

## **Cardiff Community Safety Partnership**

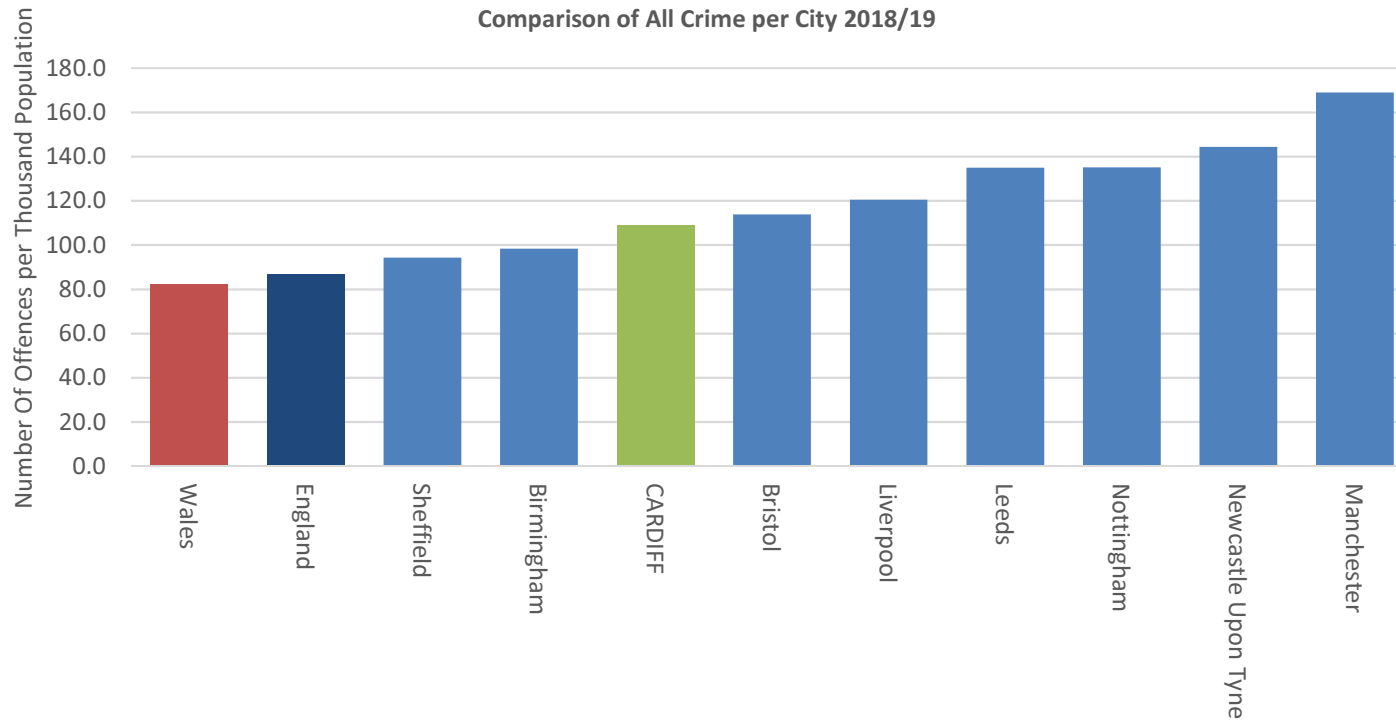
**Community & Adult Services Scrutiny Committee**  
**8 January 2020**



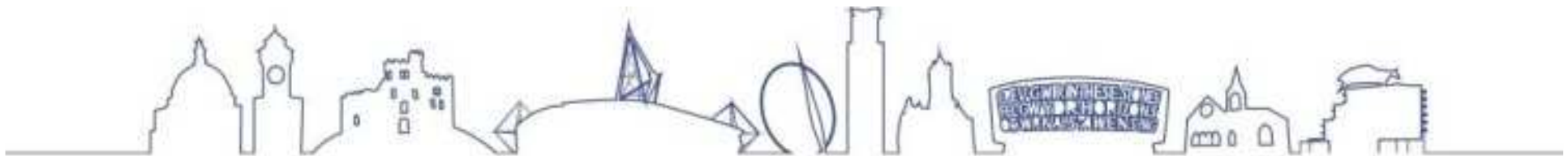
# Cardiff is a relatively safe city: Crime figures



Overall Crime – How does Cardiff compare with other major cities?



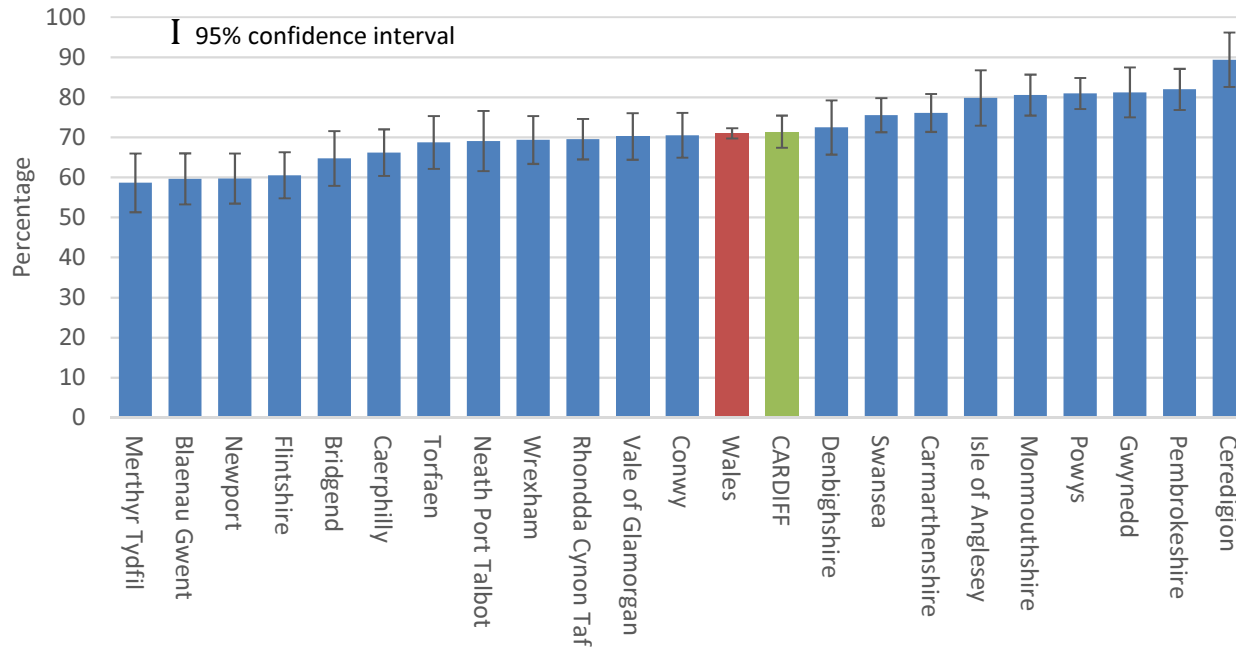
Source: Recorded Crime Data, Home Office/ONS



# Cardiff is a relatively safe city: Perceptions



Percentage of People Feeling Safe at Home, Walking in the Local Area, and When Travelling, 2018-19



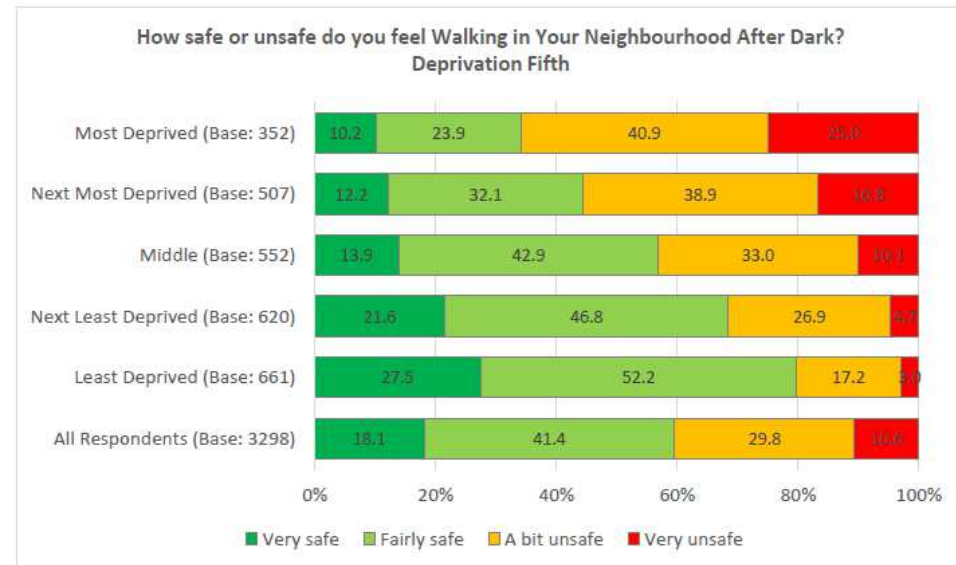
Source: National Survey for Wales, Welsh Government



# Ask Cardiff Survey 2019

Two significant trends:

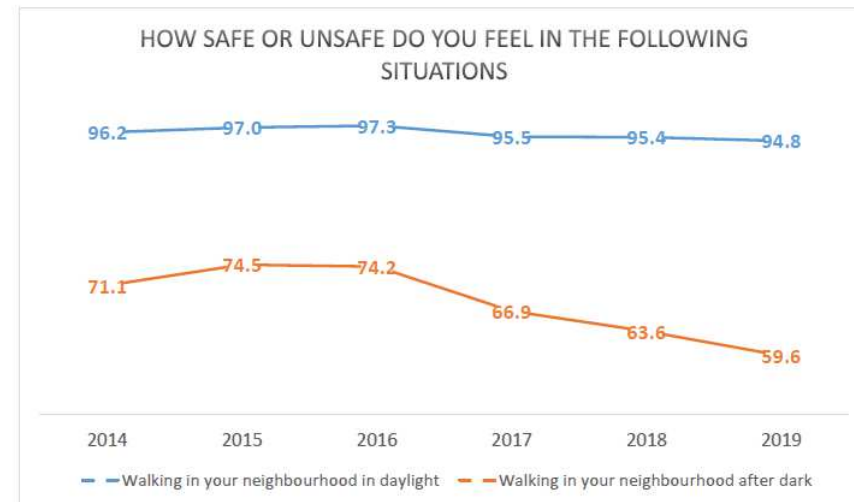
- **People living in the most deprived communities feel less safe than those living in the least deprived**



# Ask Cardiff Survey 2019

Two significant trends:

- People living in the most deprived communities tend to feel less safe than those living in the least deprived
- **People feel less safe than they did in 2016 in some situations.**



NB: - The chart above depicts the feeling of safety 'Very' and 'Fairly' combined for all respondents Walking in their neighbourhood in the daylight and after dark, for the period 2014-2019.

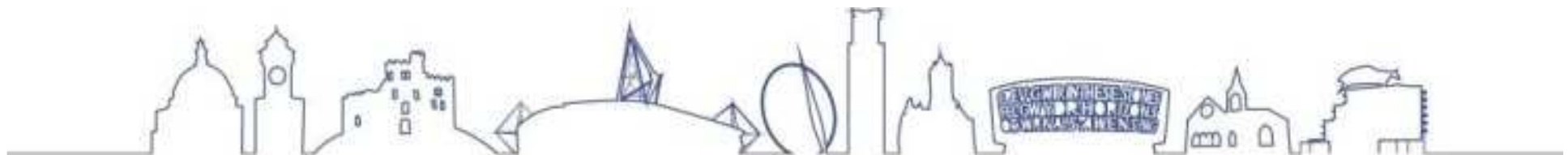


# Community Safety Perceptions Data



## Key messages:

- Cardiff is a relatively safe city compared to UK Core Cities
- Perceptions of safety compared to other non-rural Welsh local authorities is positive
- People living in the most deprived communities tend to feel less safe than those living in the least deprived
- People feel less safe than they did in 2016, in a range of situations



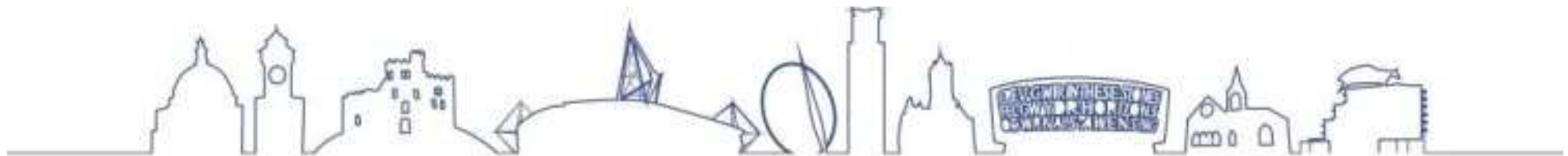


# Community Safety: Partnership Arrangements



New Community Safety Governance arrangements were put in place in 2019:

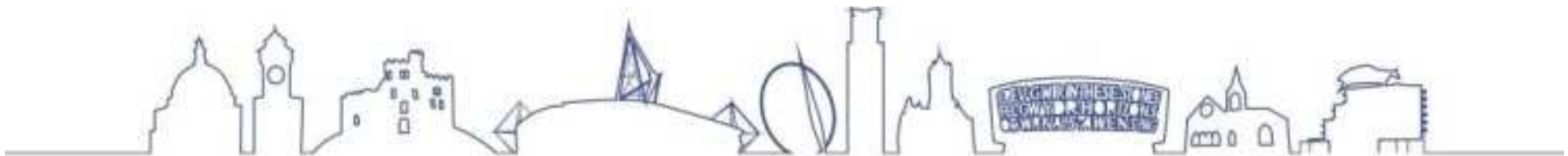
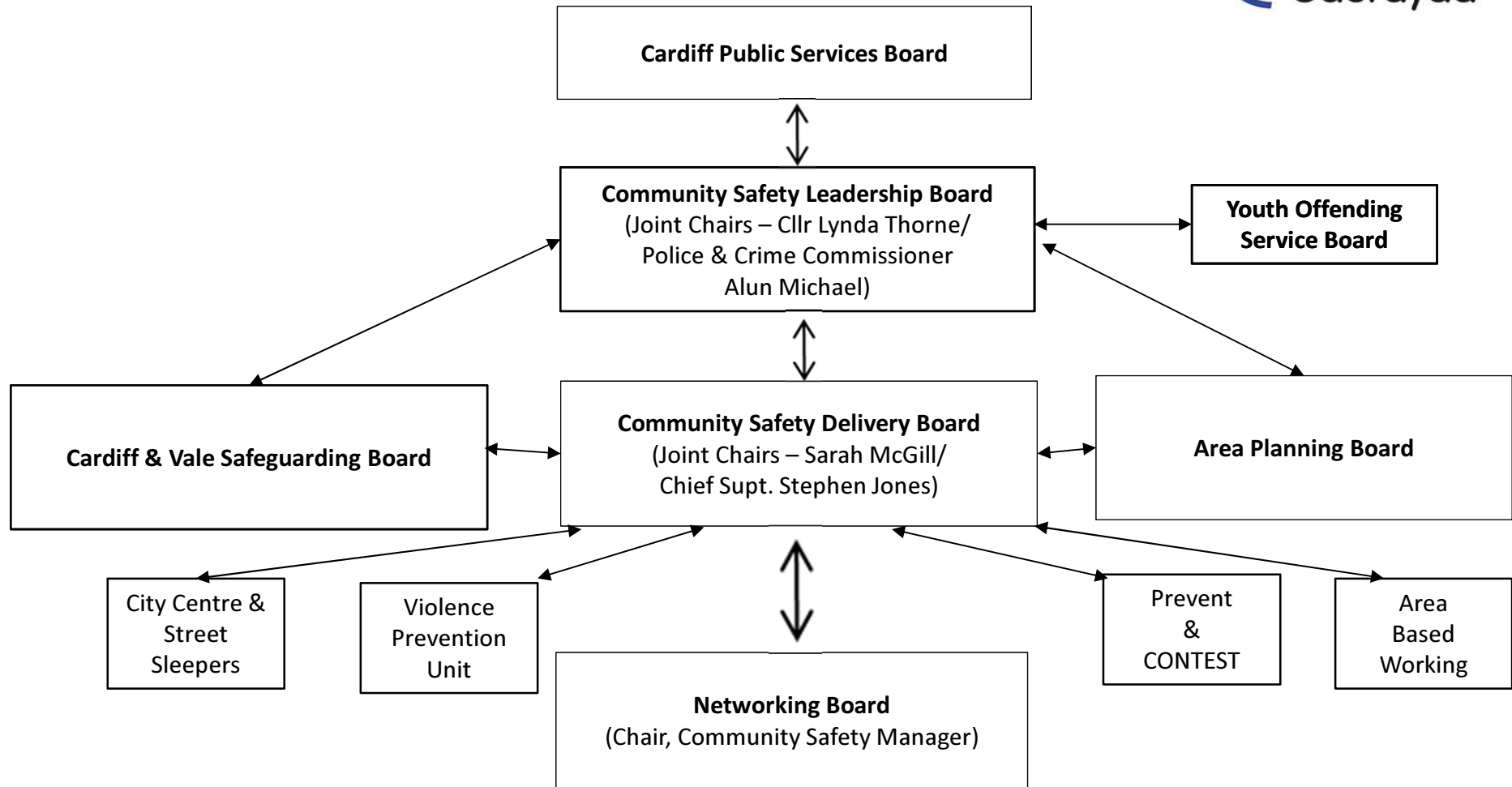
1. A strategic leadership board
2. An operational delivery board, priority focused, with task and finish groups as required
3. Network - dissemination of key messages, best practice, information sharing



# Governance (continued)



Page 10

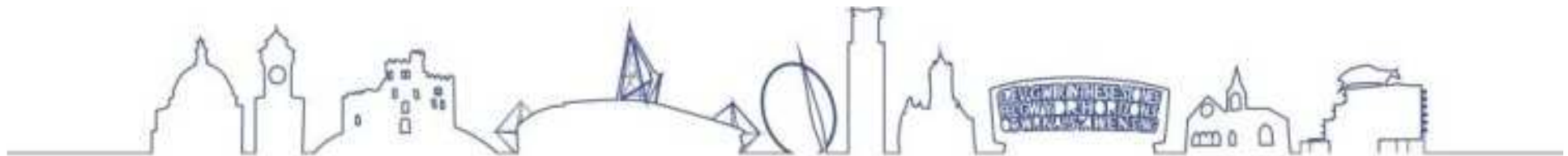


# Priorities 2019/20

- City Centre and Street Sleepers
- Violence Prevention
- Prevent and CONTEST
- Area Based Working (Butetown; Splott/Tremorfa)

Task groups assigned to these priorities will focus on:

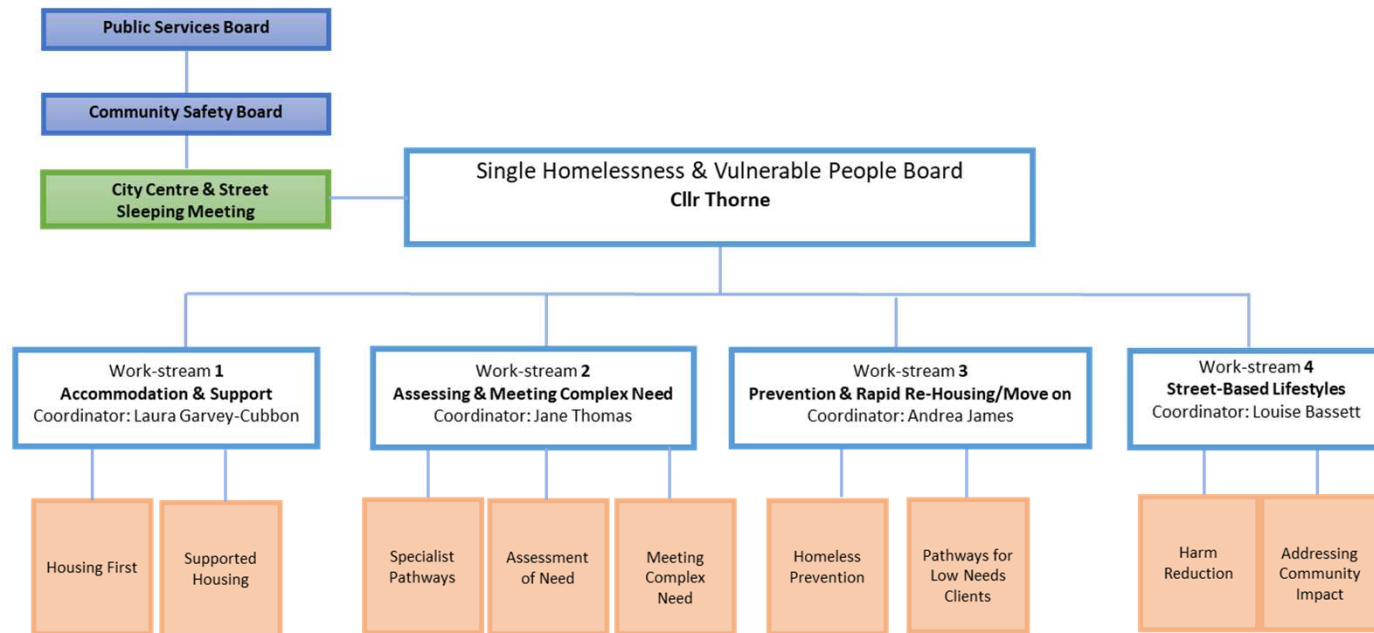
- **Building Resilience** - helping communities to respond to/recover from adverse situations.
- **Addressing Vulnerabilities** - identifying those subject to harm or are likely to be exposed to harm and taking action.
- **Person Centred** – services designed around the needs of the individual, family or community



# e.g. City Centre & Street Sleepers



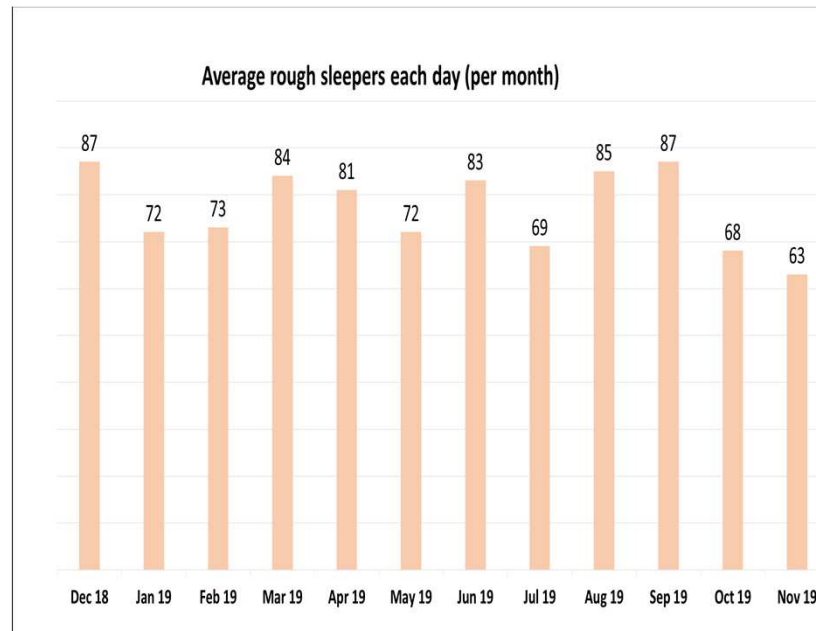
Establishment of a Single Homeless and Vulnerable People Board. Chaired by Cllr Thorne, to enable partnership working to address a wide range of issues.



# e.g. City Centre & Street Sleepers

Fortnightly multi agency meetings to address rough sleeping in the City Centre.

City Centre Tents- 2<sup>nd</sup> February 2019 to 2<sup>nd</sup> December 2019



# Summary

- Effective governance arrangements in place with right partners around the table
- Strategic and operational leadership, and alignment to other relevant boards
- Priorities identified with Task and Finish arrangements in place reporting to every Leadership / Delivery board
- Network established for intelligence sharing
- Perceptions and crime data reported to all levels to inform decision-making

